



# **Strategic Commissioning Framework for Primary Care Transformation in London**

**Briefing v1.0 - November 2014**

# There is significant focus on the need for change in Primary Care

Both the Five Year Forward View and the London Health Commission report set out several objectives for Primary Care:

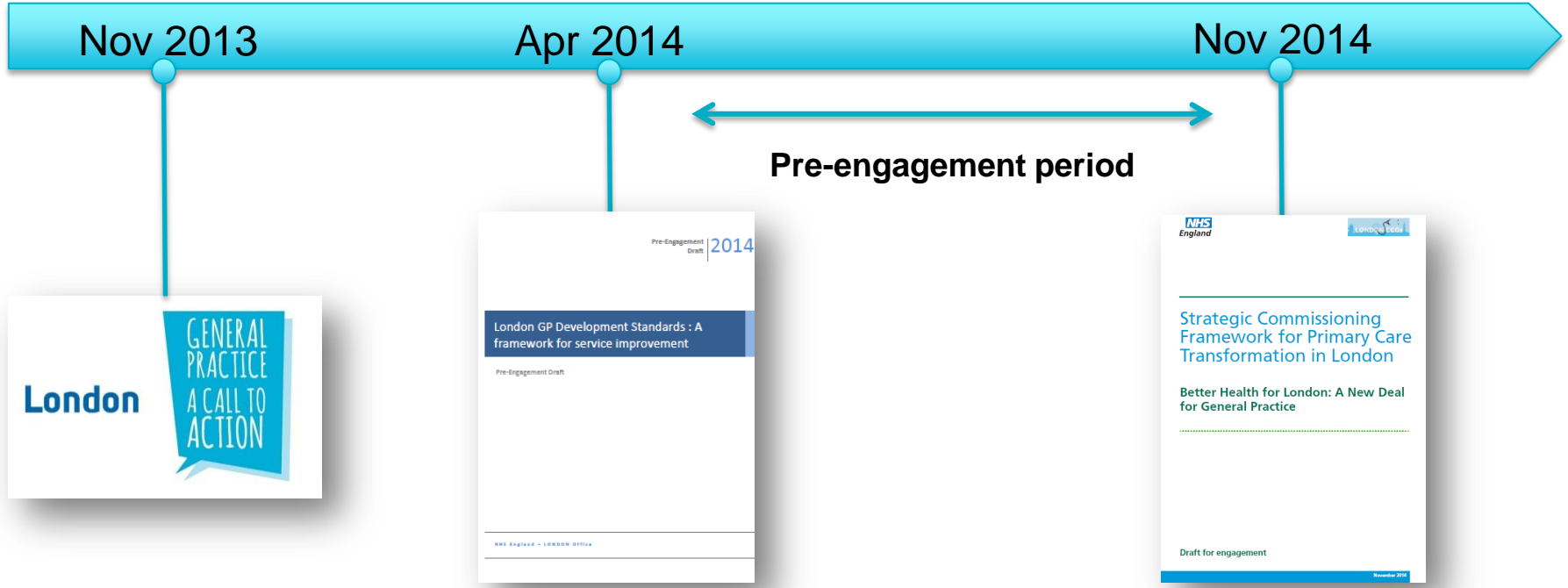


- **Stabilise core funding for general practice and review how resources are fairly made available**
- **Give CCGs more influence over the NHS budget – investment: acute to primary & community**
- **Provide new funding through schemes such as the Challenge fund – innovation, access**
- **Expand as fast as possible the number of GPs, community nurses and other staff.**
- **Design new incentives to tackle health inequalities.**
- **Expand funding to upgrade primary care infrastructure and scope of services**
- **Help the public deal with minor ailments without GP or A&E**
- **Potential new care models** such as Multispecialty Community Providers (MCPs) and Primary & Acute Care Systems (PACS)



- **Increase the proportion of NHS spending on primary and community services**
- **Invest £1billion in developing GP premises**
- **Set ambitious service and quality standards for general practice**
- **Promote and support general practices to work in networks**
- **Allow patients to access services from other practices in the same network**
- **Allow existing or new providers to set up services in areas of persistent poor provision**

# London has also been working on how some of the challenges faced by general practice could be mitigated



The **Call to Action** outlined some of the challenges of General Practice in London..

In April a draft publication was released, which outlined **a new patient offer**.  
Since then there has been **considerable engagement** to **further strengthen this offer**, and understand the necessary **considerations for delivering it**.

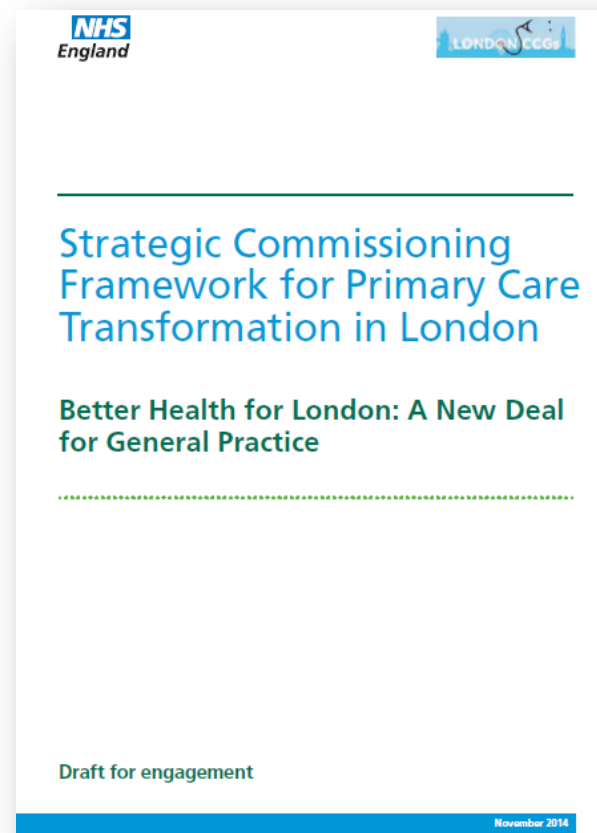
# The Strategic Commissioning Framework

The result is a draft *Strategic Commissioning Framework*, aiming to support transforming primary care in the capital

A new vision for General Practice

A new Patient offer described in a general practice specification

A description of considerations for making it happen



# A new vision for General Practice in London

Patients and clinicians alike have told us about the importance of three areas of care. This forms the basis of the new patient offer (also called the specification)



## Accessible Care

Better access primary care professionals, at a time and through a method that's convenient and with a professional of choice.



## Coordinated Care

Greater continuity of care between NHS and other health services, named clinicians, and more time with patients who need it.

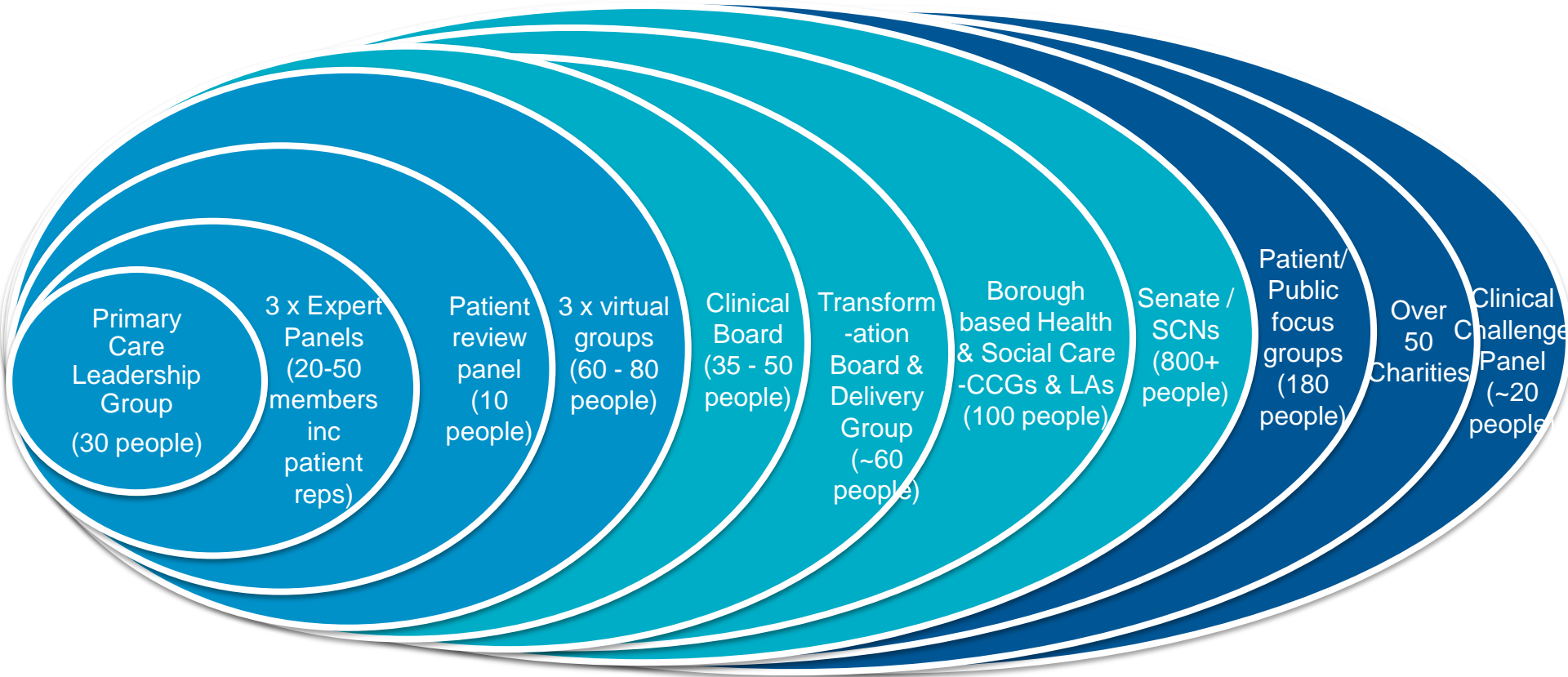


## Proactive Care

More health prevention by working in partnerships to reduce morbidity, premature mortality, health inequalities, and the future burden of disease in the capital. Treating the causes, not just the symptoms.

# ..Which has been widely tested

Following an initial development stage, the specification has been tested with a widening range of patients, clinicians and other stakeholders. Around **1,500** people have now been involved in testing this.



The *Strategic Commissioning Framework* which has been released for engagement reflects the feedback gathered from the above discussions.

# The Framework includes several areas of focus to support delivery of the specification

## Models of Care

- This area proposes collaborating across groups of practices, and with other partners

## Commissioning

- This area outlines the importance of supporting commissioners to work together and support to CCGs taking on co-commissioning

## Financial Implications

- This includes the estimated cost shift towards Primary Care required to deliver the new specifications, and the year on year funding shift to achieve this.

## Contracting

- This area looks at contractual considerations of delivering the specifications e.g. contracting at a population level

## Workforce Implications

- This area looks at the need for the right roles and skills in a practice and as part of a wider team

## Technology Implications

- This area looks at the ways technology could be used to deliver the specifications and maximising its use to support empowerment and innovation

## Estates Implications

- This area references the findings of the London Health Commission in terms of the variability of Primary Care estate and recommendation for investment

## Provider Development

- This area outlines the importance of supporting providers to deliver the specifications and some of the potential areas for development

## Monitoring and Evaluation

- This area outlines ways in which tools (largely already existing) can be used to support faster adoption of best practice, as well as for commissioner assurance

# Next Steps

The next stage of engagement has begun, and is expected to continue until April 2015. This document will be refreshed and reissued at the end of that period.

